

Vi30012

Syslog Information Capture Program

Features

- Automatically discover connected devices by scanning
- Captures status information from Devices with Syslog Capability
- Easy to set up and operate compared to other methods
- Saves information in an easy to access, easy to read, easy to save method
- Records can be saved to Clip board, Excel or Word programs
- Can run in minimized mode with any Windows™ based program to alert problems



Applications

- Any network using equipment that contains Syslog capability
- Monitoring individual device status depending on configuration
- Locate specific network problems and their causes

SysCap™ is a user friendly utility program that captures information from network devices with Syslog capability. Syslog is easy to setup and operate avoiding the complexity of SNMP which may times requires specific firmware interfaces. SysCap captures the complete messages transmission easily providing information on connection status and operation.

SysCap™ provides a simple way for monitoring connection status, help in determining and testing network performance.

Technical Specification*

System Requirements

Operating System	Windows™ 7 and Later
Memory	265Kbytes Recommended
Processor	Intel i5
Storage Space	250Mbytes

Communications

UDP

Ordering Information

PART No.	Description
Vi30012	Syslog Information Capture Software

List of Supported Switch Based Events and Alerts*

Events and alerts transmitted and found in switch GUI

Determined by connected devices

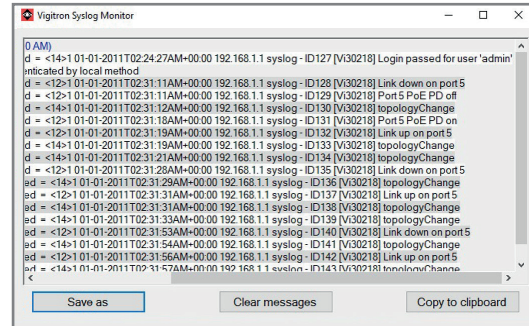
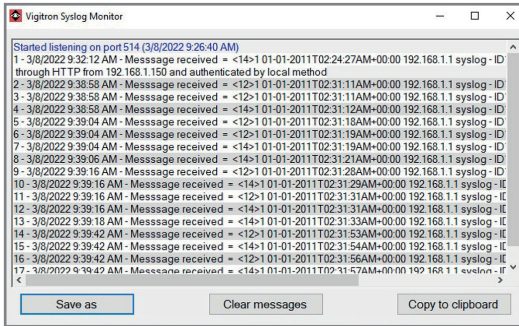
Syslog Messages will depend on the connected device

- Cold start / Warm start
- Link_Down Port
- Link_Up Port
- Authenticating Failure PoE_On
- Port PoE_Off Port
- SecurePort TX/RX Disabled
- Power Budget: Budget Exceed
- Disable Port Power Budget: Attempting to restore-re enable Port Power Budget
- Under Safe Levels
- Re enable Port Traffic Detected-Port
- Loss of Traffic Detected
- Port Power Surge (port is still active)
- Power Drop (port is still active)
- High Packet Loss Detected Packet Loss Normal

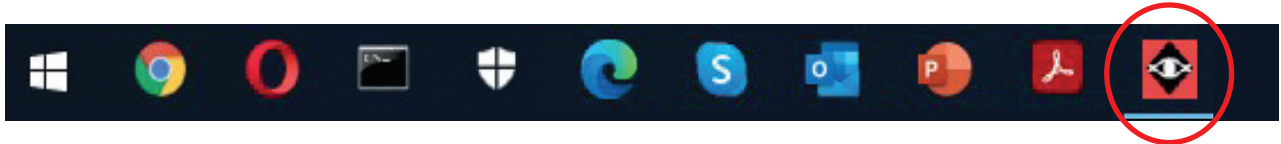
*Features are dependent upon the ability of connected devices to communicate.



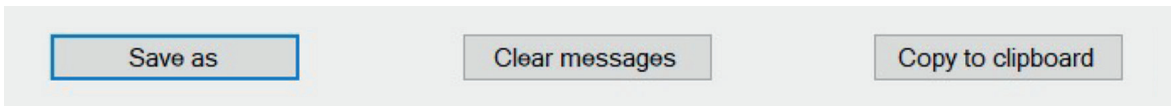
Technical Specification*



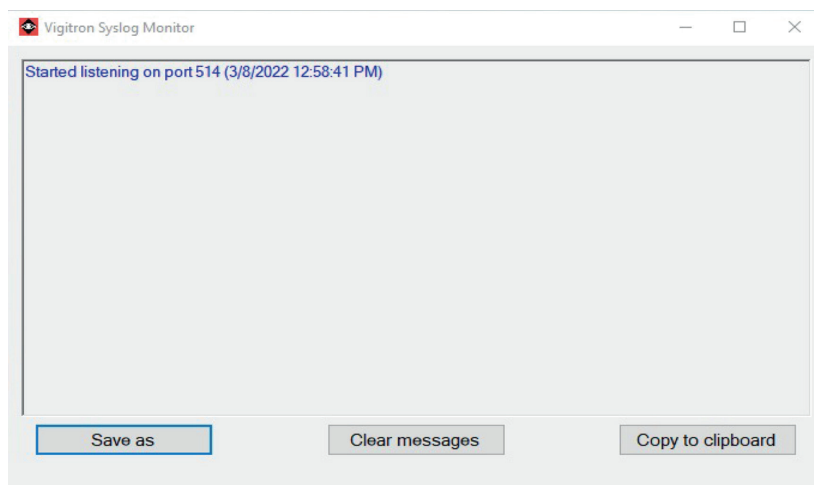
Receiving and Logging Syslog Messages



Run in minimized mode and receive alerts



Easy to operate function button



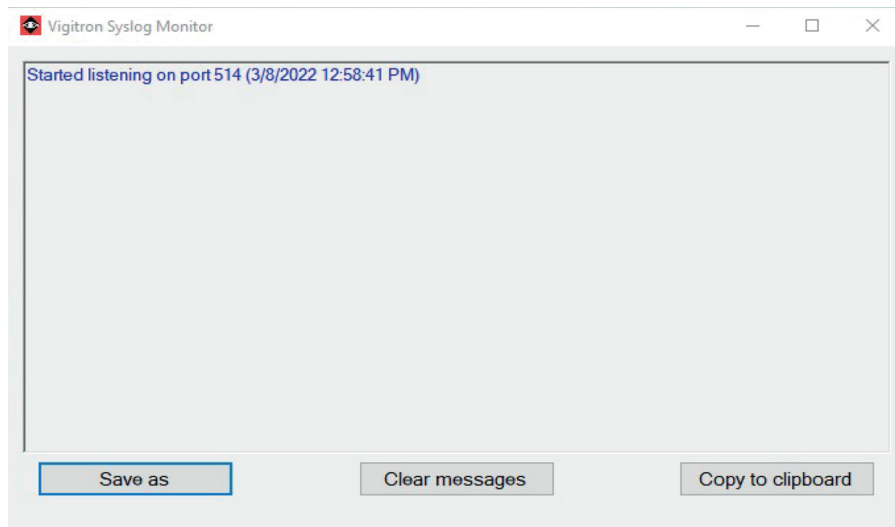
Messages can be saved in various formats



Technical Specification*

```
File Edit Format View Help
? Started listening on port 514 (3/8/2022 1:08:26 PM)
1 - 3/8/2022 1:08:43 PM - Message received = <12>1 01-01-2011T06:00:56AM+00:00 192.168.1.1 syslog - ID164 [Vi30218] Link down on port 5
2 - 3/8/2022 1:08:43 PM - Message received = <12>1 01-01-2011T06:00:57AM+00:00 192.168.1.1 syslog - ID165 [Vi30218] Port 5 PoE PD off
3 - 3/8/2022 1:08:43 PM - Message received = <14>1 01-01-2011T06:00:57AM+00:00 192.168.1.1 syslog - ID166 [Vi30218] topologyChange
4 - 3/8/2022 1:08:49 PM - Message received = <12>1 01-01-2011T06:01:04AM+00:00 192.168.1.1 syslog - ID167 [Vi30218] Port 5 PoE PD on
5 - 3/8/2022 1:08:49 PM - Message received = <12>1 01-01-2011T06:01:05AM+00:00 192.168.1.1 syslog - ID168 [Vi30218] Link up on port 5
6 - 3/8/2022 1:08:51 PM - Message received = <14>1 01-01-2011T06:01:06AM+00:00 192.168.1.1 syslog - ID169 [Vi30218] topologyChange
7 - 3/8/2022 1:08:53 PM - Message received = <14>1 01-01-2011T06:01:08AM+00:00 192.168.1.1 syslog - ID170 [Vi30218] topologyChange
8 - 3/8/2022 1:09:01 PM - Message received = <12>1 01-01-2011T06:01:14AM+00:00 192.168.1.1 syslog - ID171 [Vi30218] Link down on port 5
9 - 3/8/2022 1:09:01 PM - Message received = <14>1 01-01-2011T06:01:15AM+00:00 192.168.1.1 syslog - ID172 [Vi30218] topologyChange
10 - 3/8/2022 1:09:01 PM - Message received = <12>1 01-01-2011T06:01:16AM+00:00 192.168.1.1 syslog - ID173 [Vi30218] Link up on port 5
11 - 3/8/2022 1:09:01 PM - Message received = <14>1 01-01-2011T06:01:17AM+00:00 192.168.1.1 syslog - ID174 [Vi30218] topologyChange
12 - 3/8/2022 1:09:03 PM - Message received = <14>1 01-01-2011T06:01:19AM+00:00 192.168.1.1 syslog - ID175 [Vi30218] topologyChange
13 - 3/8/2022 1:09:25 PM - Message received = <12>1 01-01-2011T06:01:38AM+00:00 192.168.1.1 syslog - ID176 [Vi30218] Link down on port 5
14 - 3/8/2022 1:09:25 PM - Message received = <14>1 01-01-2011T06:01:39AM+00:00 192.168.1.1 syslog - ID177 [Vi30218] topologyChange
15 - 3/8/2022 1:09:25 PM - Message received = <12>1 01-01-2011T06:01:41AM+00:00 192.168.1.1 syslog - ID178 [Vi30218] Link up on port 5
16 - 3/8/2022 1:09:27 PM - Message received = <14>1 01-01-2011T06:01:42AM+00:00 192.168.1.1 syslog - ID179 [Vi30218] topologyChange
17 - 3/8/2022 1:09:29 PM - Message received = <14>1 01-01-2011T06:01:44AM+00:00 192.168.1.1 syslog - ID180 [Vi30218] topologyChange
```

Logs are easily copied to Clip Board



Programs can clear and restarted with time stamping